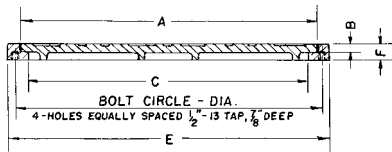
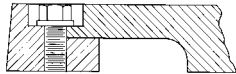


R-1749 Series
Telephone Design Large
Manhole Frame, Solid Lid

Light Duty

Specify if security bolting required (2 per lid).



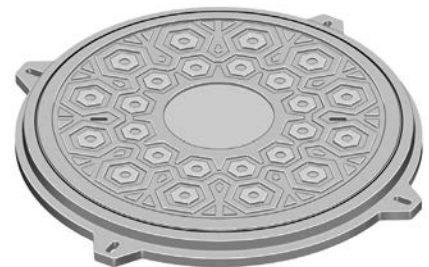
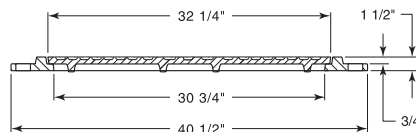
Dimensions in inches

Catalog No.	A	B	C	E	F	Anchor Bolt Circle
R-1749-A	29 1/4	3/4	27 3/4	32	1 1/2	30-1/2
R-1749-B	32 1/4	3/4	30 3/4	35	1 1/2	33-1/2

R-1749-B1
Manhole Frame, Solid Lid

Light Duty

Furnished with four 3/4" x 1" anchor slots on 37" diameter bolt circle.



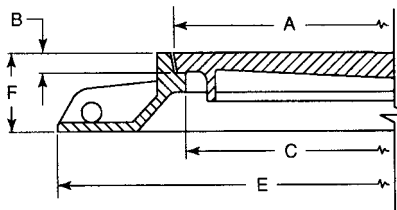
R-1750 Series
Telephone Design Large
Manhole Frame, Solid Lid

Heavy Duty

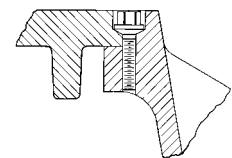
Furnished with machined horizontal and vertical bearing surfaces.

Covers can be bolted to frame with two pentagon head special monel security bolts upon request.

Wrenches available to fit special bolt at extra cost. Advise quantity required.



Illustrating R-1750-B



Dimensions in inches

Catalog No. Standard	Catalog No. Security Bolted	A	B	C	E	F	Anchor Bolt Circle*	Grate Alt.
R-1750-A	R-1750-AB	26	1 3/8	24	43	10		R-2300
R-1750-B	R-1750-BB	29	1 3/8	27	46	10	43-1/2	R-2290
R-1750-B1	R-1750-B1B	29	1 3/8	27	46	5 5/8	43-1/2	R-2290-A
R-1750-B2	R-1750-B2B	29	1 3/8	27	46	3 1/2	43-1/2	
R-1750-C	R-1750-CB	32	1 3/8	30	49	10	43-1/2	
R-1750-C1	R-1750-C1B	32	1 3/8	30	49	5 5/8	43-1/2	
R-1750-C1S	R-1750-C1SB	32	1 3/8	30	46	5 5/8	43-1/2	R-2750
R-1750-CS	R-1750-CSB	32	1 3/8	30	46	10	43-1/2	R-2255

* Furnished standard with four 1" diameter holes in base flange, equally spaced.